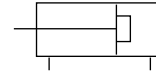


QGX Series Mini Cylinder



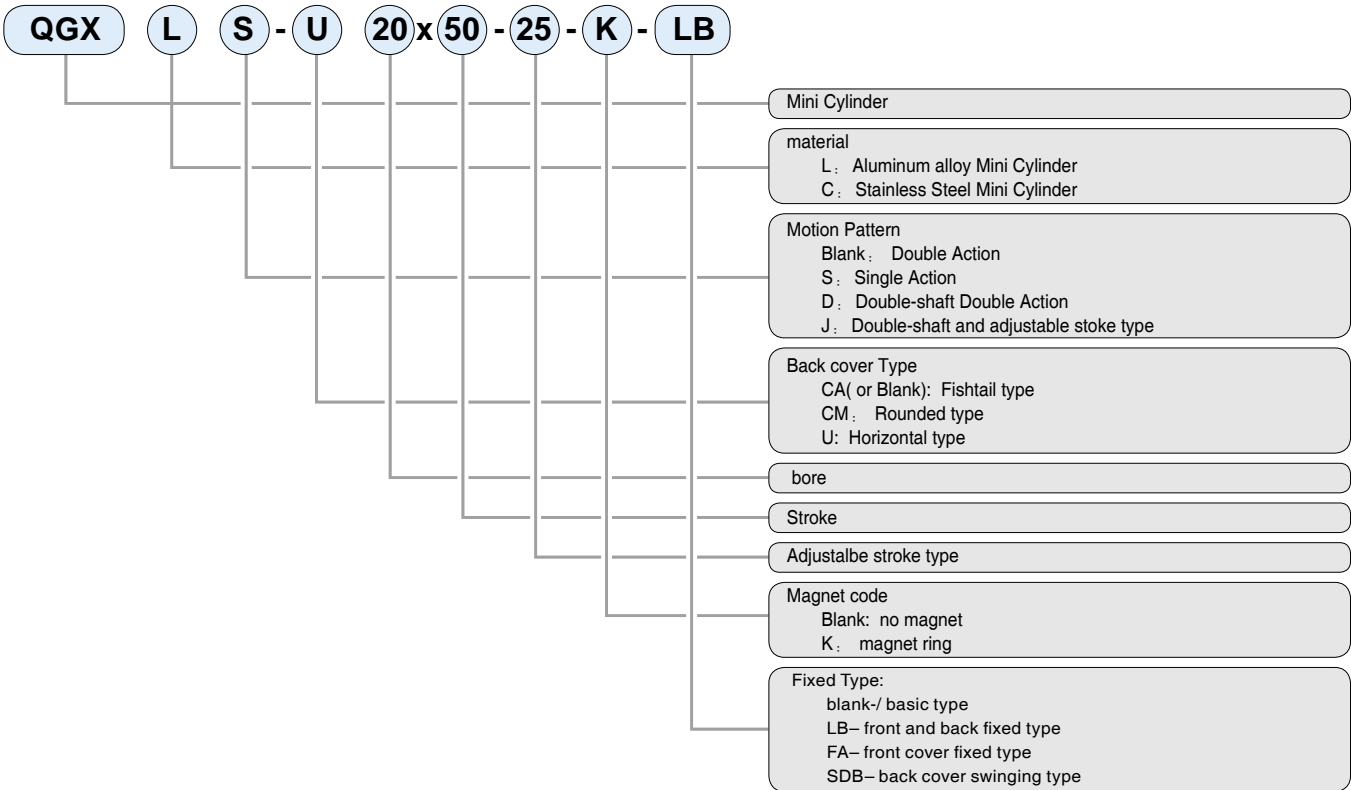
Graphical symbols



Features

QGX series cylinder apply to low force request system combination seals, multi install type.

Note for type



Specification

Cylinder bore	16	20	25	32	40
Joint pipe bore	M5 × 0.8	G1/8			
Buffer type	cushion spacer				
Motion pattern	Double Action or Single Action				
Working medium	Air				
Fixed type	Basic type, LB type, FA type, SDB type				
Operating voltage Range (Kgf/cm ²)	1~9.0				
Ensured pressure resistance (Kgf/cm ²)	13.5				
Operating speed range (mm/s)	50~800				
Working temp. (°C)	-5~50				

Stroke

Bore (mm)	Standard Stroke (mm)																Max. Stroke	Permissible Stroke		
16	25	50	75	80	100	125	150	160	175	200							300	500		
20	25	50	75	80	100	125	150	160	175	200	250	300							500	650
25	25	50	75	80	100	125	150	160	175	200	250	300	350	400	450	500	500	650		
32	25	50	75	80	100	125	150	160	175	200	250	300	350	400	450	500	500	650		
40	25	50	75	80	100	125	150	160	175	200	250	300	350	400	450	500	500	650		

Cylinder theory output sheet

Cylinder bore	16				20				25				32				40			
Ext. Dia of piston rod	6				8				10				12				16			
Motion Pattern	Single Action	Double Action		Single Action	Double Action		Single Action	Double Action		Single Action	Double Action		Single Action	Double Action		Single Action	Double Action			
		Pressure side	Pull side		Pressure side	Pull side		Pressure side	Pull side		Pressure side	Pull side		Pressure side	Pull side		Pressure side	Pull side		
Compression Area(cm ²)	2.01	2.01	1.81	3.14	3.14	2.64	4.90	4.90	4.12	8.04	8.04	6.90	12.56	12.56	10.55					
Air Pressure (Kgf/cm ²)	1	—	2.01	1.81	—	3.14	2.64	—	4.90	4.12	—	8.04	6.90	—	12.56	10.55				
	2	—	4.02	3.62	1.57	6.28	5.28	2.45	9.80	8.24	4.02	16.08	13.80	6.28	25.12	21.10				
	3	2.01	6.03	5.43	4.71	9.42	7.92	7.35	14.70	12.36	12.06	24.12	20.70	18.84	37.68	31.65				
	4	4.02	8.04	7.24	7.85	12.56	10.56	12.25	19.60	16.48	20.10	32.16	27.60	31.40	50.24	42.20				
	5	6.03	10.05	9.05	10.99	15.70	13.20	17.15	24.50	20.60	28.14	40.20	34.50	43.96	62.80	52.75				
	6	8.04	12.06	10.86	14.13	18.84	15.84	22.05	29.40	24.72	36.18	48.24	41.40	56.52	75.36	63.30				
	7	10.04	14.07	12.67	17.27	21.98	18.48	26.95	34.30	28.84	44.22	56.28	48.30	69.08	87.92	73.85				
	8	—	—	—	20.41	25.12	21.12	31.85	39.20	32.96	52.26	64.32	55.20	81.64	100.48	84.40				
	9	—	—	—	23.55	28.26	23.76	36.75	44.10	37.08	60.30	72.36	62.10	94.20	113.04	94.95				

QGXL series Aluminum alloy Mini Cylinder

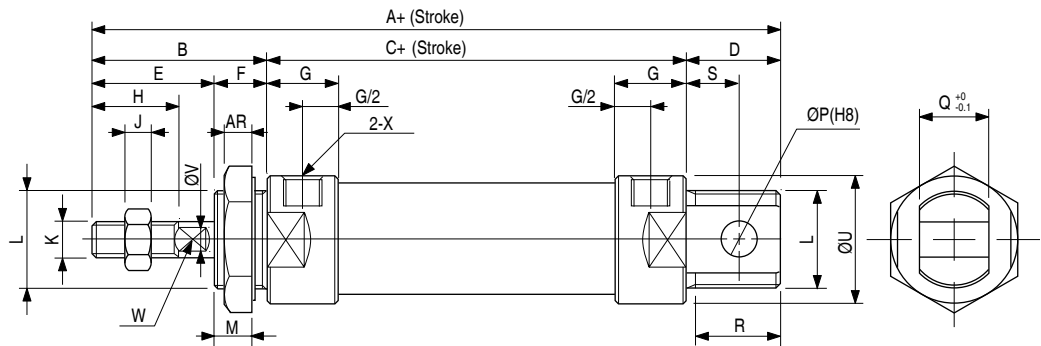
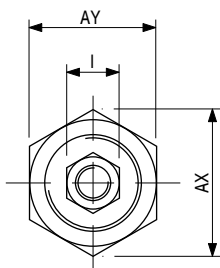
Features

Al-Alloy body, light weight, reliable performance.

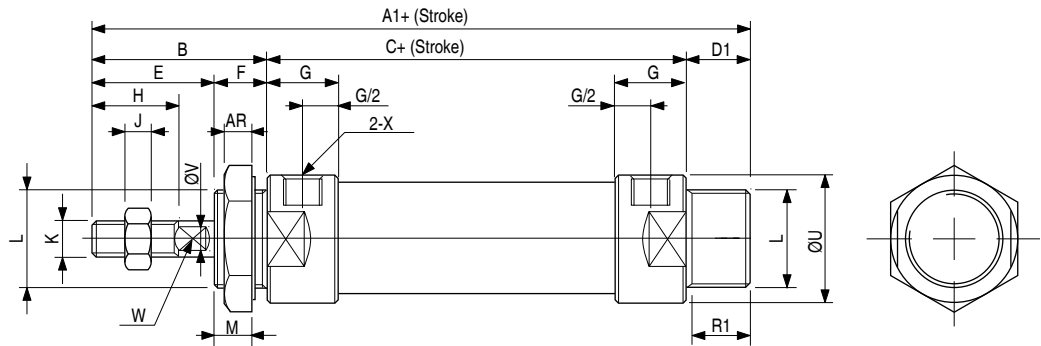
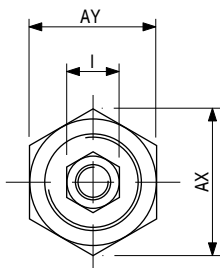
Outlook & Dimension

Double Action

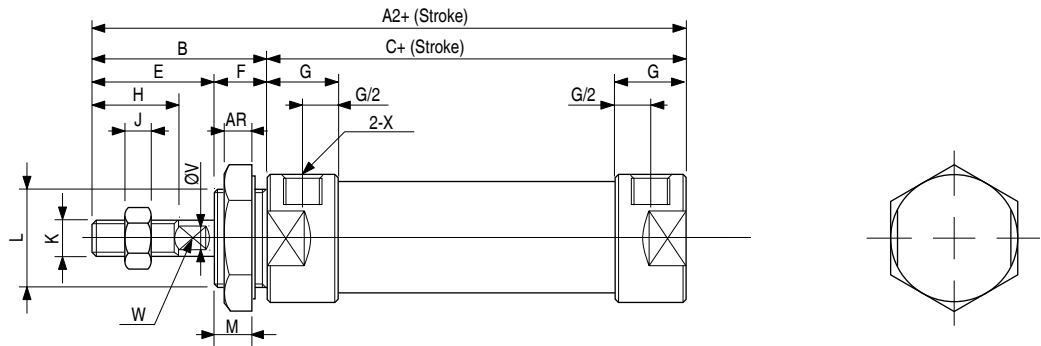
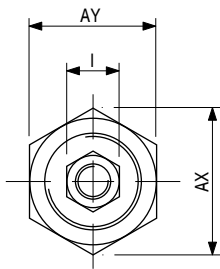
QGXL-CA



QGXL-CM



QGXL-U

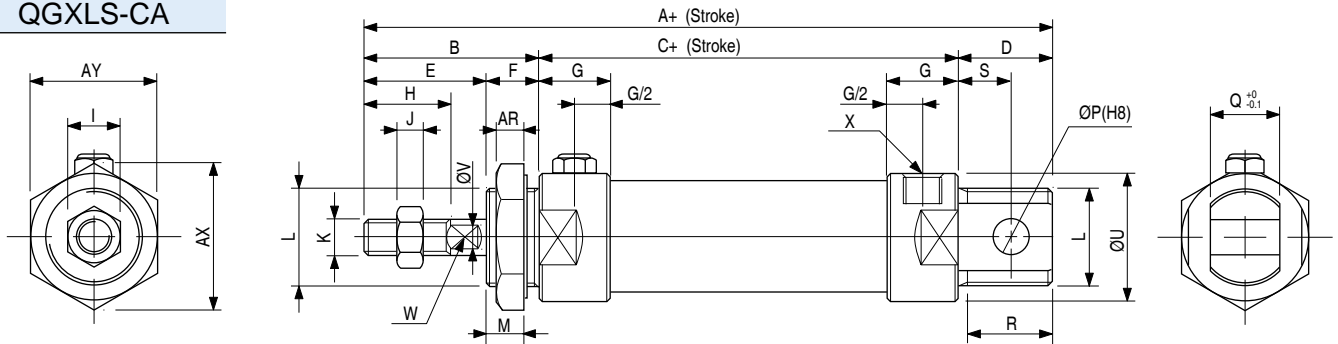


Symbol/ Bore	A	A1	A2	B	C	D	D1	E	F	G	H	I	J	K	L	M	P	Q	R	R1	S	U	V	W	X	AR	AX	AY
16	104	104	90	38	52	15	15	24	14	11	16	10	5	M6 × 1	M16 × 1.5	8	6	12	13	13	6	20	6	/	M5	7	24	27.5
20	131	122	110	40	70	21	12	28	12	16	20	12	6	M8 × 1.25	M22 × 1.5	10	8	16	19	12	12	29	8	6	G1/8	7	33	29
25	135	128	114	44	70	21	14	30	14	16	22	17	6	M10 × 1.25	M22 × 1.5	12	8	16	19	14	12	34	10	8	G1/8	7	33	29
32	141	128	114	44	70	27	14	30	14	16	22	17	6	M10 × 1.25	M24 × 2.0	12	10	16	25	14	15	39.5	12	10	G1/8	8	37	32
40	165	152	138	46	92	27	14	32	14	22	24	17	7	M12 × 1.25	M30 × 2.0	12	12	20	25	14	15	49.5	16	14	G1/4	9	47	41

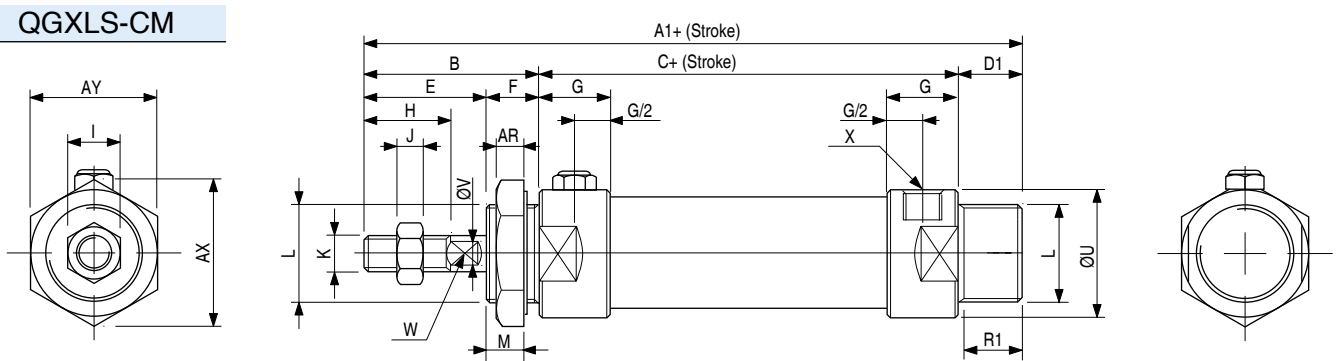
Outlook & Dimension

Single Action

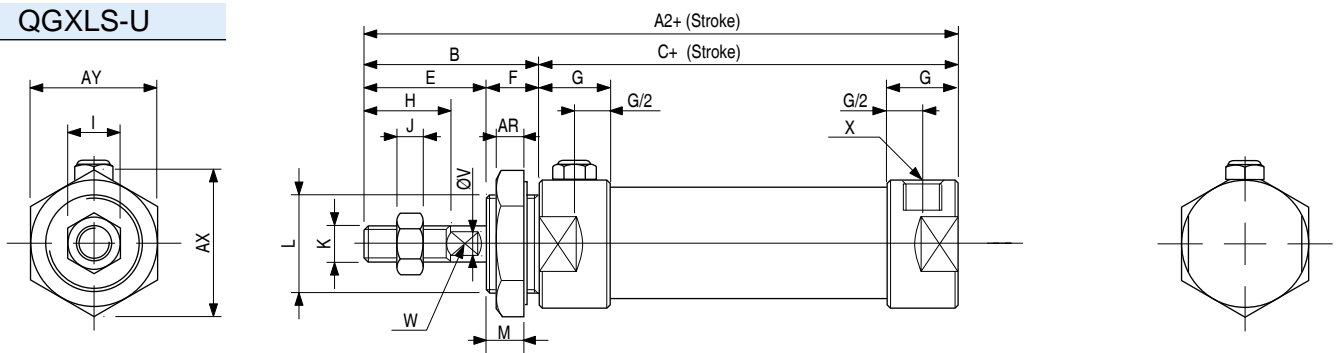
QGXLS-CA



QGXLS-CM



QGXLS-U



Symbol/ Bore	A		A1		A2		B	C		D	D1	E	F	G	H	I	J
	0~50	51~100	0~50	51~100	0~50	51~100		0~50	51~100								
20	131	156	122	147	110	135	40	70	95	21	12	28	12	16	20	12	6
25	135	160	128	153	114	139	44	70	95	21	14	30	14	16	22	17	6
32	141	166	128	153	114	139	44	70	95	27	14	30	14	16	22	17	6
40	165	190	152	177	138	163	46	92	117	27	14	32	14	22	24	17	7

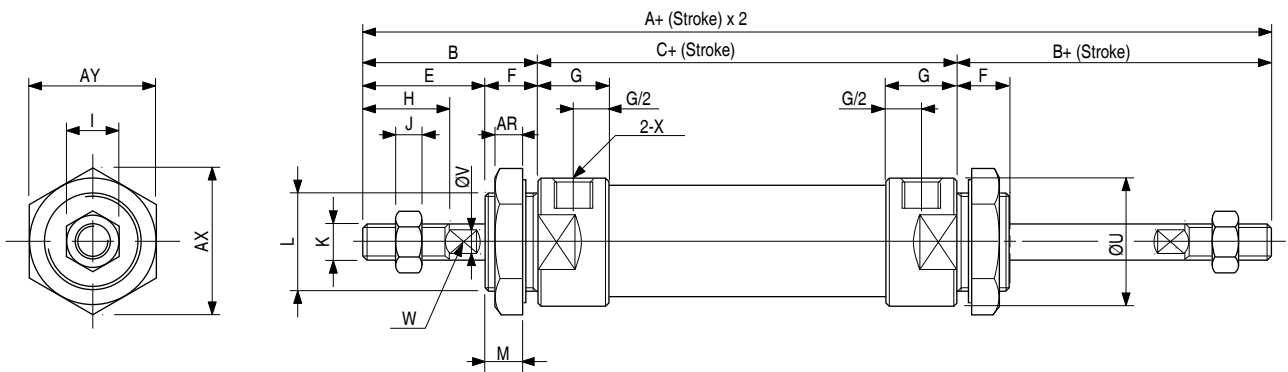
Symbol/ Bore	K	L	M	P	Q	R	R1	S	U	V	W	X	AR	AX	AY
20	M8 × 1.25	M22 × 1.5	10	8	16	19	12	12	29	8	6	G1/8	7	33	29
25	M10 × 1.25	M22 × 1.5	12	8	16	19	14	12	34	10	6	G1/8	7	33	29
32	M10 × 1.25	M24 × 2.0	12	10	16	25	14	15	39.5	12	10	G1/8	8	37	32
40	M12 × 1.25	M30 × 2.0	12	12	20	25	14	15	49.5	16	14	G1/4	9	47	41

QGX Series Mini cylinder

Outlook & Dimension

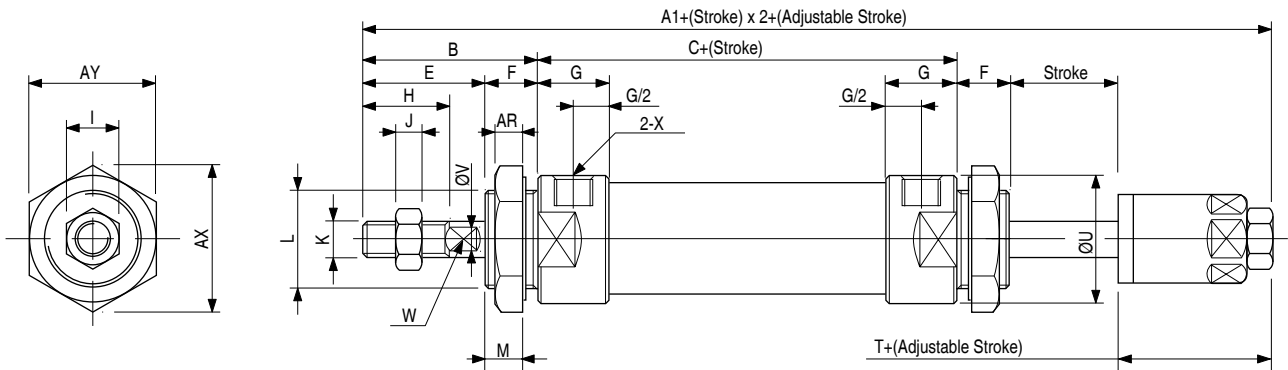
Double-Shaft Action

QGXLD



Double-Shaft and Adjustable Action

QGXLJ



Symbol/ Bore	A	A1	B	C	E	F	G	H	I	J	K	L	M	U	V	W	X	AR	AX	AY	T
20	131	122	40	70	28	12	16	20	12	6	M8 × 1.25	M22 × 1.5	10	29	8	6	G1/8	7	33	29	19
25	135	128	44	70	30	14	16	22	17	6	M10 × 1.25	M22 × 1.5	12	34	10	6	G1/8	7	33	29	21
32	141	128	44	70	30	14	16	22	17	6	M10 × 1.25	M24 × 2.0	12	39.5	12	10	G1/8	8	37	32	21
40	165	152	46	92	32	14	22	24	17	7	M12 × 1.25	M30 × 2.0	12	49.5	16	14	G1/4	9	47	41	21

QGXC Series Stainless Steel Mini Cylinder

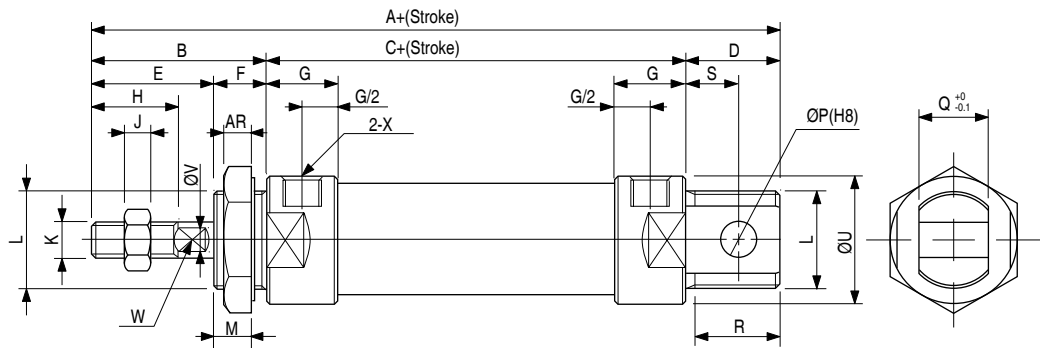
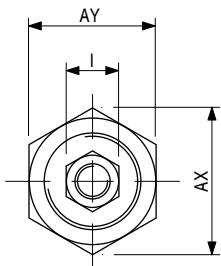
Features

Al-Alloy body, light weight, reliable performance.

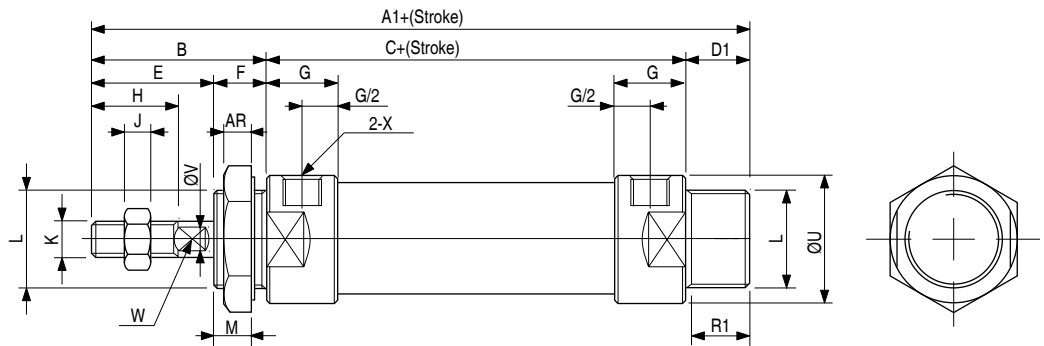
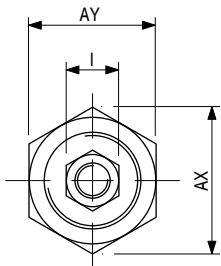
Outlook & Dimension

Double Action

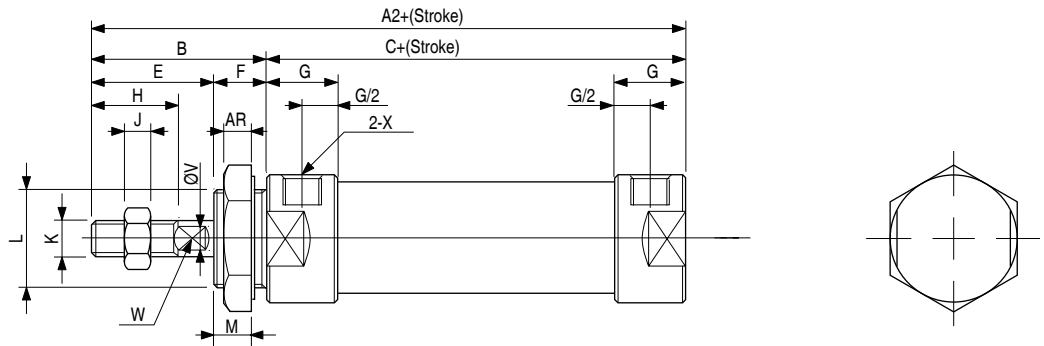
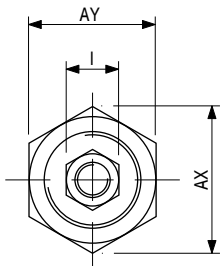
QGXC-CA



QGXC-CM



QGXC-U



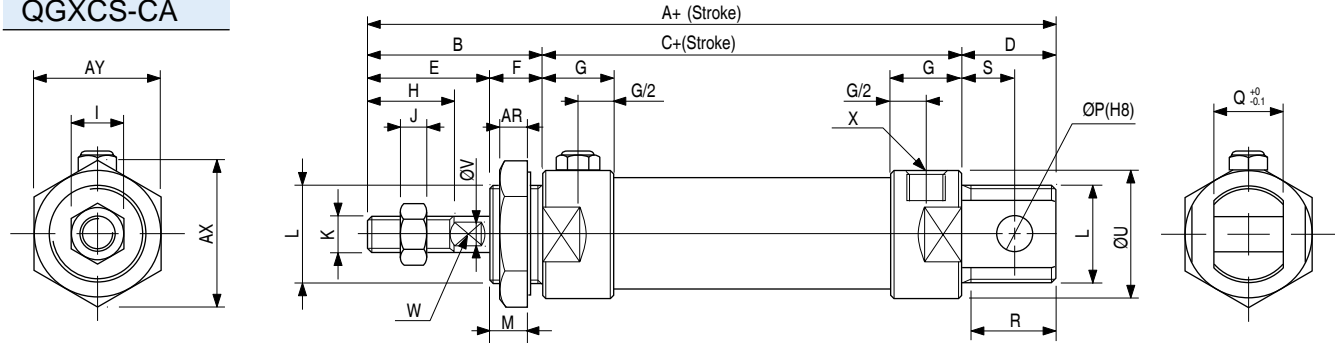
Symbol/ Bore	A	A1	A2	B	C	D	D1	E	F	G	H	I	J	K	L	M	P	Q	R	R1	S	U	V	W	X	AR	AX	AY
16	114	114	98	38	60	15	15	22	16	10	16	10	5	M6 × 1	M16 × 1.5	14	6	12	14	14	9	21	6	5	M5	6	24	27.5
20	137	128	116	40	76	21	12	28	12	16	20	12	6	M8 × 1.25	M22 × 1.5	10	8	16	19	12	12	27	8	6	G1/8	7	33	29
25	141	134	120	44	76	21	14	30	14	16	22	17	6	M10 × 1.25	M22 × 1.5	12	8	16	19	14	12	30	10	8	G1/8	7	33	29
32	147	134	120	44	76	27	14	30	14	16	22	17	6	M10 × 1.25	M24 × 2.0	12	10	16	25	14	15	35	12	10	G1/8	8	37	32
40	149	136	122	46	76	27	14	32	14	16.7	24	17	7	M12 × 1.25	M30 × 2.0	12	12	20	25	14	15	41.6	16	14	G1/8	9	47	41

QGX Series Mini cylinder

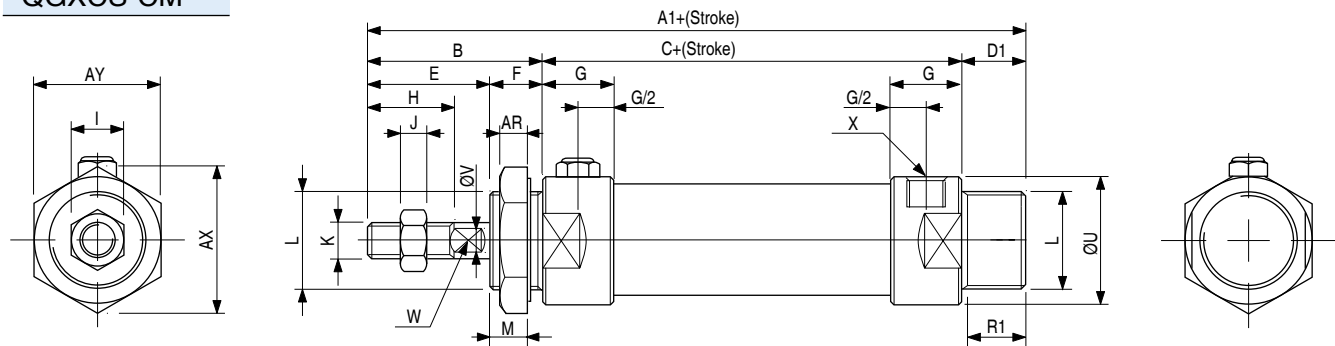
Outlook & Dimension

Single Action

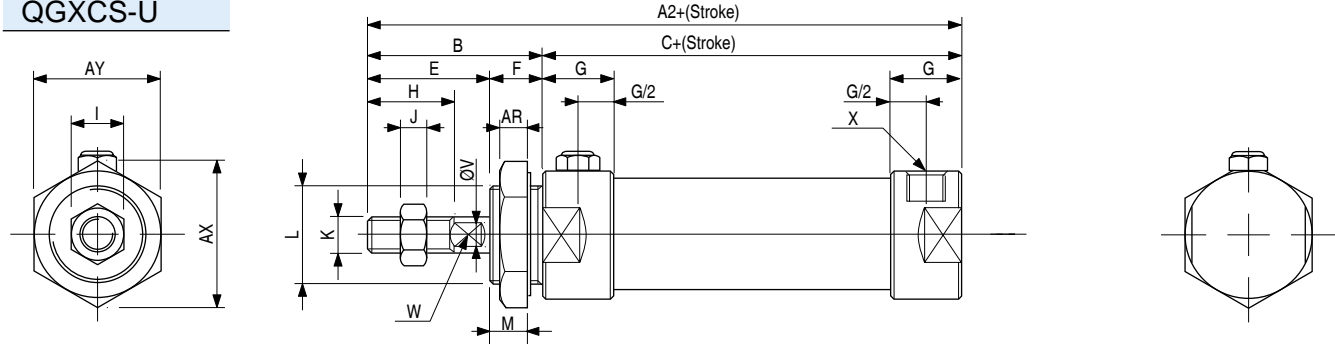
QGXC5-CA



QGXC5-CM



QGXC5-U

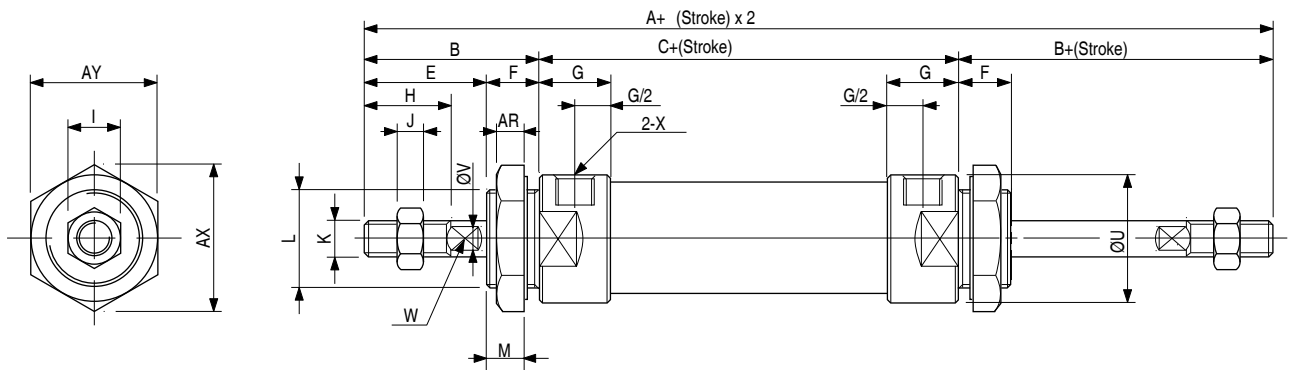


Symbol/ Bore	A		A1		A2		B	C		D	D1	E	F	G	H	I	J
	0~50	51~100	0~50	51~100	0~50	51~100		0~50	51~100								
20	137	162	128	153	116	141	40	76	101	21	12	28	12	16	20	12	6
25	141	166	134	159	120	145	44	76	101	21	14	30	14	16	22	17	6
32	147	172	134	159	120	145	44	76	101	27	14	30	14	16	22	17	6
40	149	174	136	161	122	147	46	76	101	27	14	32	14	22	24	17	7

Symbol/ Bore	K	L	M	P	Q	R	R1	S	U	V	W	X	AR	AX	AY
20	M8 × 1.25	M22 × 1.5	10	8	16	19	12	12	27	8	6	G1/8	7	33	29
25	M10 × 1.25	M22 × 1.5	12	8	16	19	14	12	30	10	8	G1/8	7	33	29
32	M10 × 1.25	M24 × 2.0	12	10	16	25	14	15	35	12	10	G1/8	8	37	32
40	M12 × 1.25	M30 × 2.0	12	12	20	25	14	15	41.6	16	14	G1/8	9	47	41

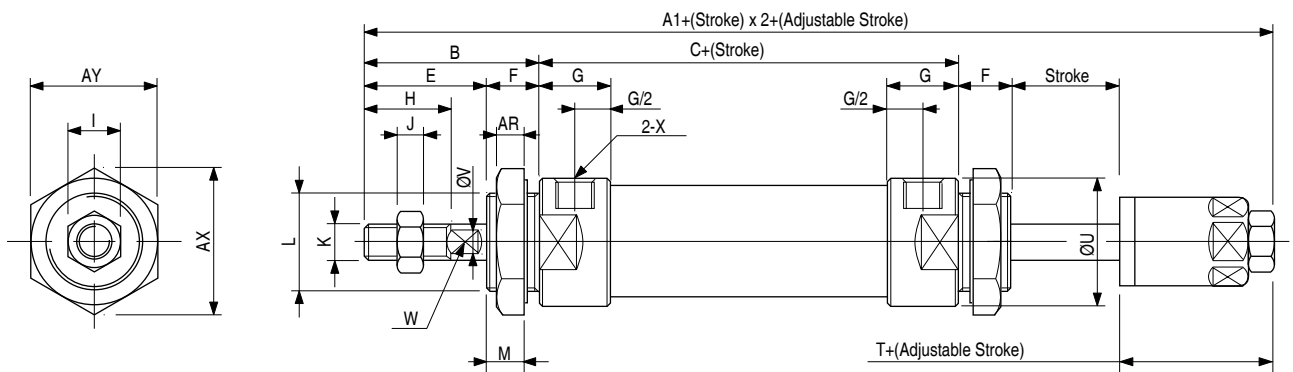
Double-Shaft Action

QGXCD



Double-Shaft and Adjustable Action

QGXCJ



Symbol/ Bore	A	A1	B	C	E	F	G	H	I	J	K	L	M	U	V	W	X	AR	AX	AY	T
20	156	153	40	70	28	12	16	20	12	6	M8 × 1.25	M22 × 1.5	10	29	8	6	G1/8	7	33	29	19
25	164	161	44	70	30	14	16	22	17	6	M10 × 1.25	M22 × 1.5	12	34	10	6	G1/8	7	33	29	21
32	164	161	44	70	30	14	16	22	17	6	M10 × 1.25	M24 × 1.5	12	39.5	12	10	G1/8	8	37	32	21
40	168	164	46	92	32	14	22	24	17	7	M12 × 1.25	M30 × 2.0	12	49.5	16	14	G1/4	9	47	41	21