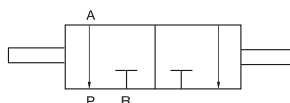


MS 系列手动滑阀

Series Manual Spool Valve



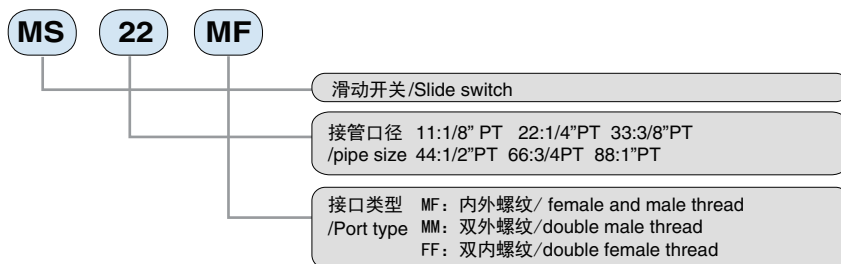
图形符号 symbols



产品特点 Features

1. 单向阀，有效流通面积大
 2. 操作简单，滑动灵敏
 3. 连接牙纹可灵活搭配选择
 4. 开闭时可将开关与执行组件之间的管路内气体排出，方便管路中组件的替换或维修。
1. One-way valve, make effective circulation area large
 2. Simple operation, sliding sensitive
 3. It can be flexible to choice the thread of the port to connect
 4. When opening and closing the gas of the pipe between the switch and implementation components can discharge, so that it will be convenience to replacement of the pipe components or maintenance

型号注释 Order Code



技术参数 Specification

型号 / Type	MS-11-MF	MS-22-MF	MS-33-MF	MS-44-MF	MS-66-MF	MS-88-MF
	MS-11-FF	MS-22-FF	MS-33-FF	MS-44-FF	MS-66-FF	MS-88-FF
	MS-11-MM	MS-22-MM	MS-33-MM	MS-44-MM	MS-66-MM	MS-88-MM
接管口径 / Joint pipe bore	1/8"	1/4"	3/8"	1/2"	3/4"	1"
动作方式 / Motion pattern	手控直动式 / Hand-operated direct-acting					
工作介质 / Working medium	空气 (经40 μm滤网过滤) / air (by 40 μm filter)					
工作温度 / Working temp.	-20~70°C					
工作压力范围 / Working pressure rang	0~10kgf/cm ²					
最大耐压力 / Max. pressure resistance	15kgf/cm ²					
位置数 / Number of positions	二位三通 / 3/2-ways					
本体材质 / Body material	铜 / copper			铝合金 / Aluminum alloy		
外环材质 / Outer ring material	铝合金 / Aluminum alloy					